

memmert

wiring diagram



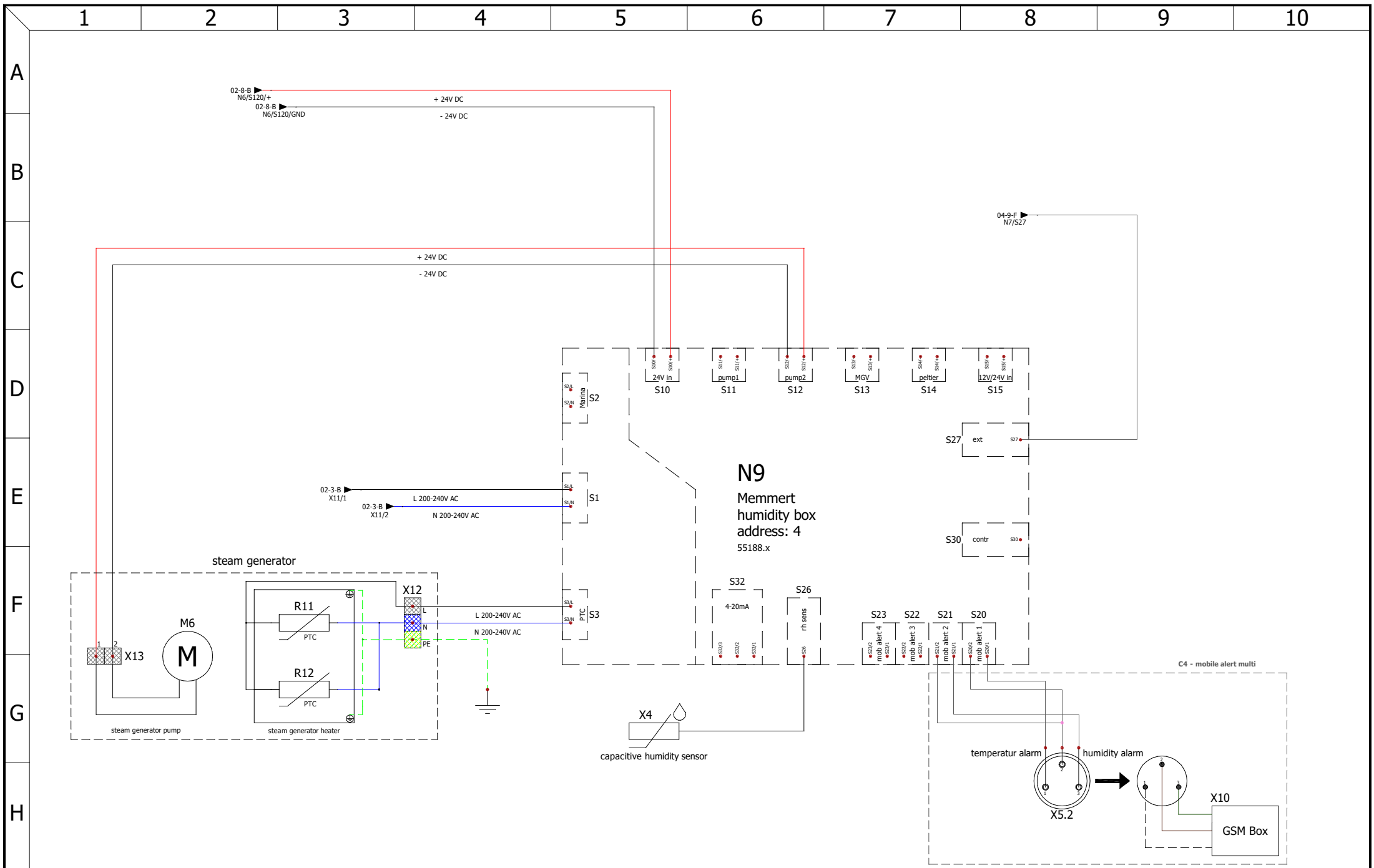
constant climate chambers


designation: HPP eco

size: 2200

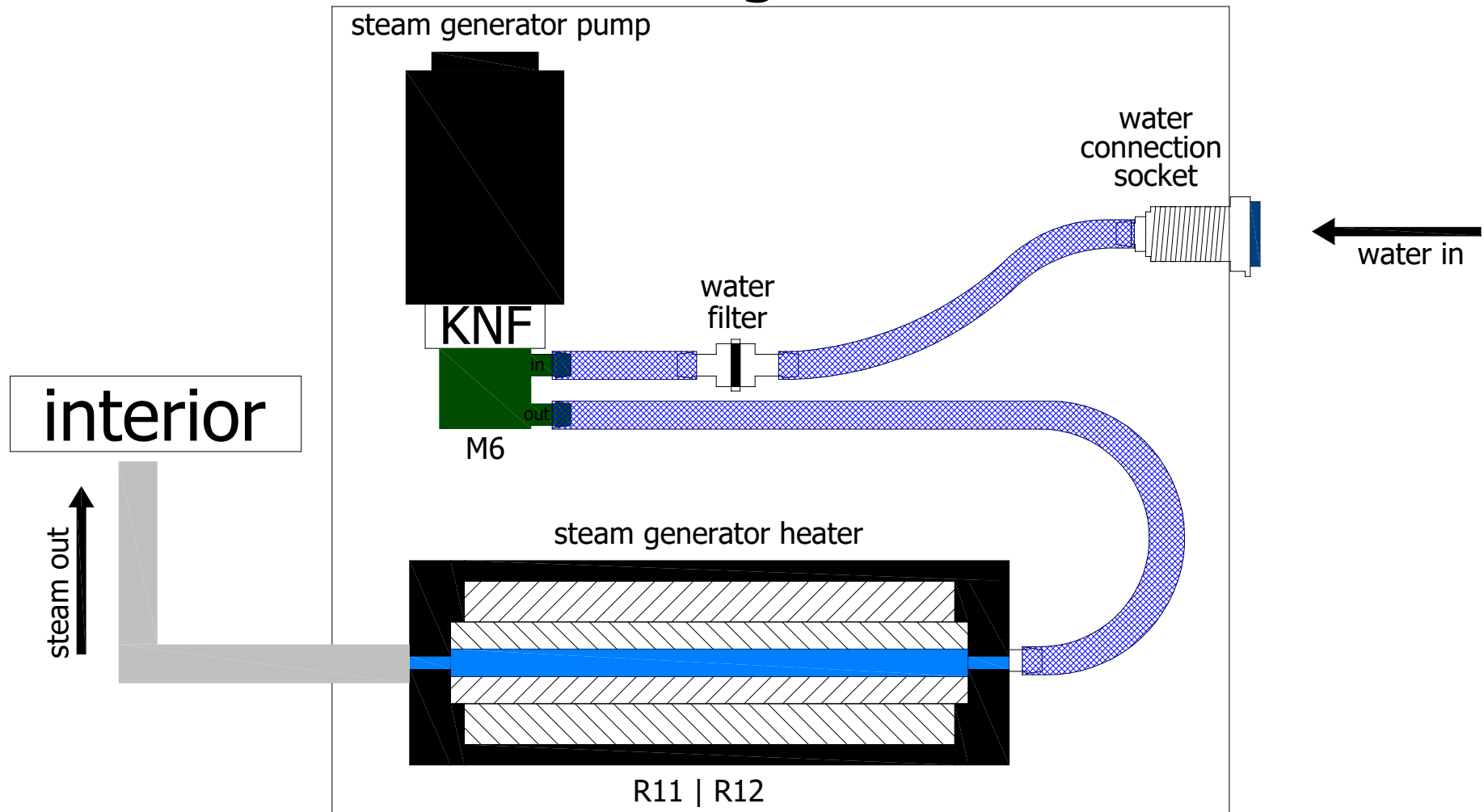
nominal voltage: 200-240V~

drawing number: D48892

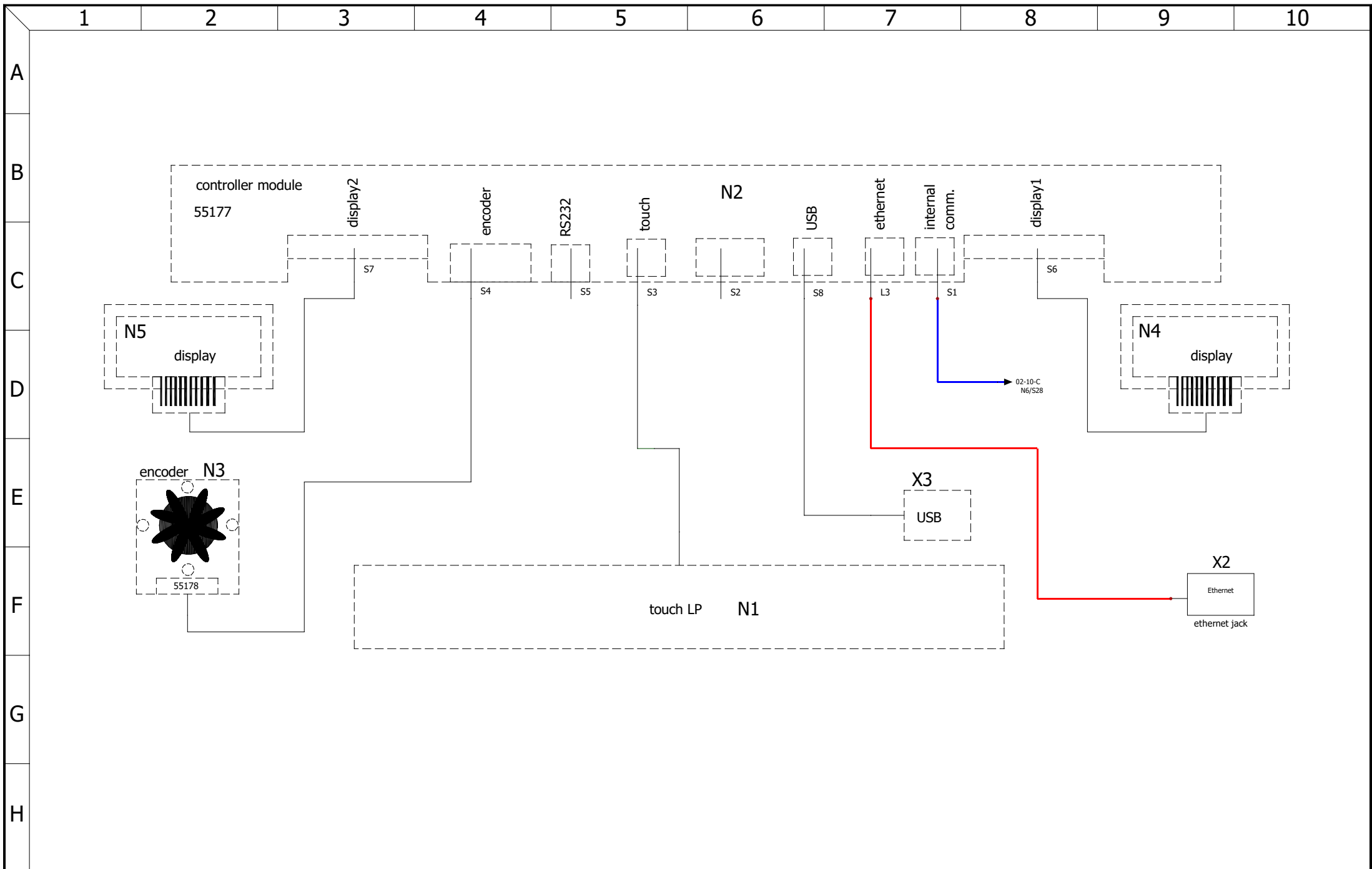


| | | | | | | | | | |
|--|--------------|------------|----------------------------------|--------------------------------------|-----|--------------|------|------|-----------|
|  | humidity box | | designation: HPP eco | unit or size: 2200 | rev | modification | date | name | page |
| | | | drawing number: D48892 | nominal voltage: 200-240V~ | | | | | 05 |
| | created by | 17.11.2020 | Chr. Seyfarth | | | | | | 12 |
| | checked by | 30.03.2021 | M. Haas | | | | | | |

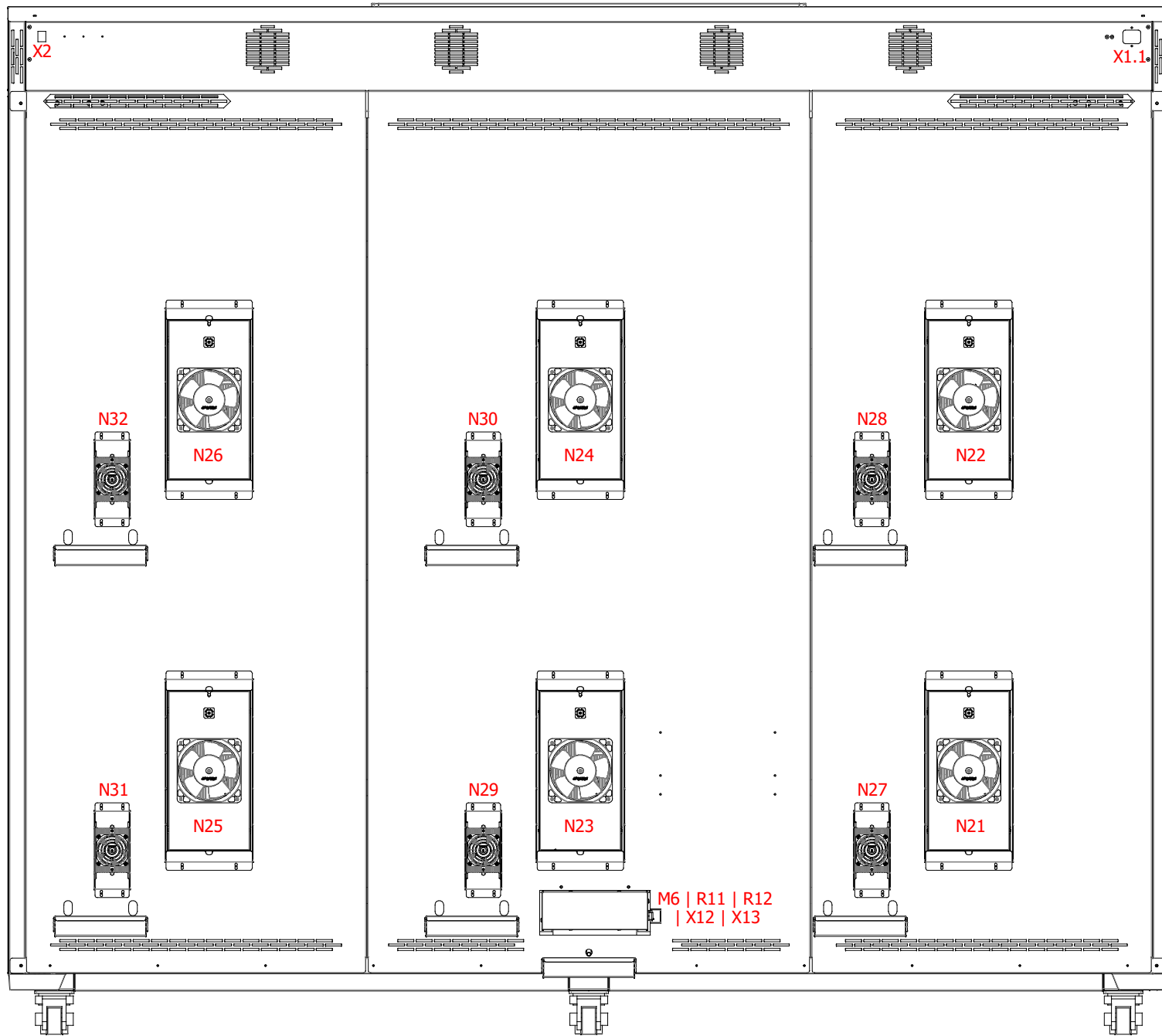
steam generator



| water connections | | | designation: | unit or size: | rev | modification | date | name | page |
|-------------------|------------|---------------|-----------------|------------------|-----|--------------|------|------|------|
| | | | HPP eco | 2200 | | | | | 06 |
| created by | 17.11.2020 | Chr. Seyfarth | drawing number: | nominal voltage: | | | | | 12 |
| checked by | 30.03.2021 | M. Haas | D48892 | 200-240V~ | | | | | |



| | | | | | | | | | |
|--|-----------------|------------|---------------|-----------------|------------------|--------------|------|------|------|
| | controller unit | | designation: | unit or size: | rev | modification | date | name | page |
| | | | HPP eco | 2200 | | | | | 07 |
| | created by | 17.11.2020 | Chr. Seyfarth | drawing number: | nominal voltage: | | | | 12 |
| | checked by | 30.03.2021 | M. Haas | D48892 | 200-240V~ | | | | |



| | | | | | | | | | |
|------------|------------|---------------|----------------------------------|--------------------------------------|-----|--------------|------|------|------|
| back | | | designation: HPP eco | unit or size: 2200 | rev | modification | date | name | page |
| | | | drawing number: D48892 | nominal voltage: 200-240V~ | | | | | 09 |
| created by | 17.11.2020 | Chr. Seyfarth | | | | | | | |
| checked by | 30.03.2021 | M. Haas | | | | | | | 12 |

| mark | article number | description | quantity |
|-----------------------------------|----------------|---|----------|
| | B35138 | protective conductor first connection | 1 |
| | B48899 | cable harness HPP eco 2200 | 1 |
| | B49141 | ribbon cable with ferrite HPPeco 2200 | 1 |
| | E07099 | patch cable 3.0 m red | 1 |
| | E07311 | patch cable 1.5 m blue | 1 |
| B1 B2 | E04956 | temperature sensors | 2 |
| F1 | E02386 | fuse holder | 1 |
| F1 | E02387 | fuse 15A | 1 |
| F2 | E02386 | fuse holder | 1 |
| F2 | E02387 | fuse 15A | 1 |
| M6 R11 R12 X12 X13 | B49556 | steam generator unit | 1 |
| N1 N2 N3 N4 N5 | B30892 | controller unit wide plus twin display | 1 |
| N6 N7 N8 | B00900 | power board IPP/HPPeco | 3 |
| N9 | B38929 | humidity power board | 1 |
| N11 N12 N13 | E07762 | power suply 24V/600W | 3 |
| N21 N22 N23 N24 N25 N26 | E49563 | peltier module | 6 |
| N27 N28 N29 N30 N31 N32 | E07666 | peltier dehumidifier | 6 |
| R21 R22 R23 | E06292 | frame heater HPP750 | 3 |
| R25 R26 | B50283 | outside door on the left with heated glass HPP 1400 2200 | 2 |
| R27 | B40254 | outside door on the right with heated glass HPP 1400 2200 | 1 |
| S1 | E06137 | power push-button-switch | 1 |
| X2 | E06251 | ethernet jack | 1 |
| X4 | E07361 | capacitive humidity sensor | 1 |
| X4 | E07759 | connection cable rh sensor | 1 |



| | | | | | | | | | |
|------------------------------|------------|---------------|----------------------------------|--------------------------------------|-----|--------------|------|------|------|
| bill of materials (standard) | | | designation: HPP eco | unit or size: 2200 | rev | modification | date | name | page |
| | date | name | drawing number: D48892 | nominal voltage: 200-240V~ | | | | | 10 |
| created by | 17.11.2020 | Chr. Seyfarth | | | | | | | 12 |
| checked by | 30.03.2021 | M. Haas | | | | | | | |

| mark | article number | description | quantity |
|-----------------|----------------|--------------------------|----------|
| X11 X21 X22 | E07369 | distribution block 4pol. | 3 |
| X1.1 | E06135 | connector plug | 1 |



| | | | | | | | | | | |
|------------------------------|-----------------|------------|---------------|------------------|-----------|-----|--------------|------|------|------|
| bill of materials (standard) | designation: | | HPP eco | unit or size: | 2200 | rev | modification | date | name | page |
| | drawing number: | | D48892 | nominal voltage: | 200-240V~ | | | | | 11 |
| | created by | 17.11.2020 | Chr. Seyfarth | | | | | | | 12 |
| | checked by | 30.03.2021 | M. Haas | | | | | | | |

